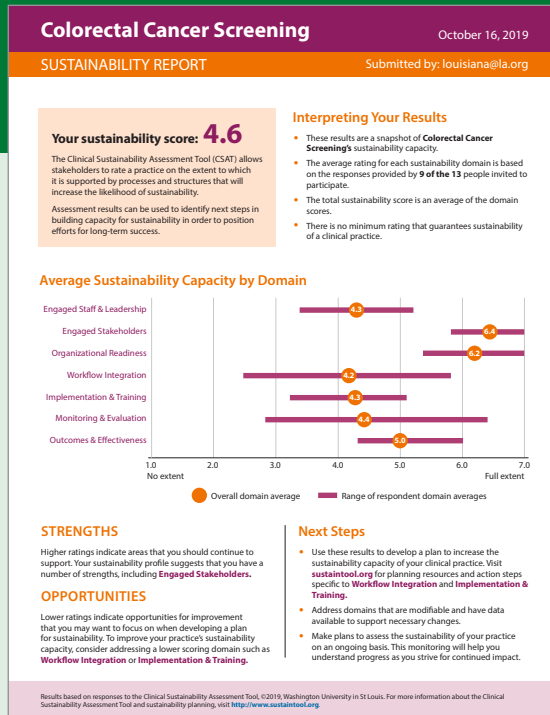


# The Clinical Sustainability Assessment Tool: measuring sustainability in healthcare settings

Sustainability of evidence-based practices is critical for delivering intended health outcomes to individuals and populations over time. Healthcare settings that have greater sustainability capacity can continue to deliver clinical interventions to achieve their desired clinical outcomes. To date, there has been relatively little focus on sustainability theory and methods in clinical science. The **Clinical Sustainability Assessment Tool (CSAT)** is a new instrument for measuring sustainability capacity in clinical and healthcare settings. Users of the free tool receive a PDF sustainability report that summarizes responses and calculates your score to use in planning efforts.

The CSAT is one of the few reliable assessment tools for measuring sustainability and is the only tool that allows quick assessment of clinical sustainability by evaluators and frontline staff, as well as researchers. The CSAT has excellent usability and reliability, and preliminary validation data suggest that the CSAT is able to distinguish among different types of clinical settings. Sustainability assessment and planning resources are available at [www.sustaintool.org](http://www.sustaintool.org).

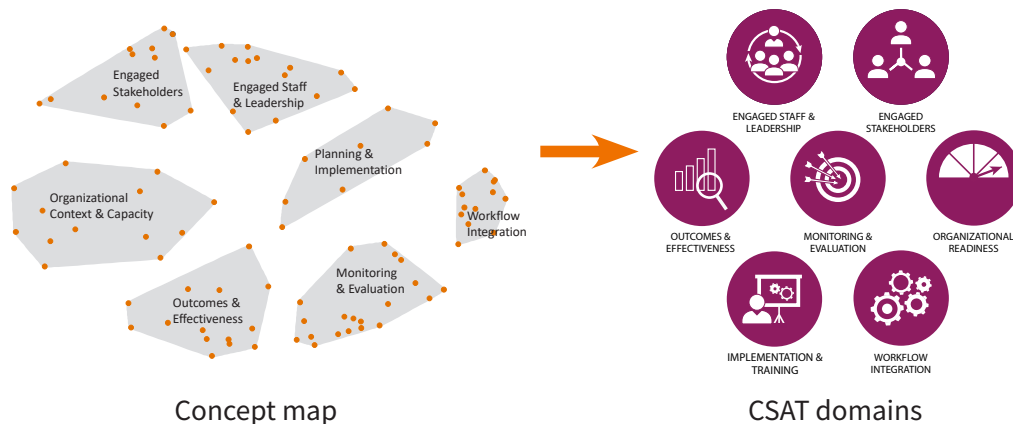
**RESEARCH BRIEF based on this article:** Malone, S, Prewitt, K, Hackett, R, Lin, JC, McKay, V, Walsh-Bailey, C & Luke, DA (2021). The Clinical Sustainability Assessment Tool: measuring organizational capacity to promote sustainability in healthcare. *Implementation Science Communications*, 2:77. <https://doi.org/10.1186/s43058-021-00181-2>



CSAT report example

## KEY TAKEAWAYS FROM THE RESEARCH

Researchers used the mixed methods approach of concept mapping to **develop the seven conceptual domains of Clinical Sustainability**



“ I think that sustainability is essential for antimicrobial stewardship and all evidence-based practices in clinical care.”

— Jason Newland, Pediatric Infectious Diseases Physician, St. Louis Children's Hospital

**The CSAT is easy to use.** It is short, requires little training, and can be used by researchers, evaluators, and frontline clinical staff.

**85%**

agreed that it was **easy to use**

**90%**

thought that most people would **learn to use the tool quickly**

Visit [sustaintool.org/csat](http://sustaintool.org/csat) for more information or to use the tool